

# TRANSPORT ASSISTANCE SCHEMES

## MULTI- PURPOSE TAXI PROGRAM

The State Government has a program that gives half price on taxi fares up to a maximum discount of \$60 per trip and a total of \$2180 per year.

You need to have a special card to get the discount. To be able to get a card you must have a form filled out by the doctor.

The doctor will only fill out the form if you;

- Live in Victoria permanently and
- Have a severe and permanent disability that stops you from being able to use public transport by yourself.



Application forms are available from the Victorian Taxi Directorate or your doctor.

**VICTORIAN TAXI DIRECTORATE**

**PH: 1800 638 802**

## VICTORIAN PATIENT TRANSPORT ASSISTANCE SCHEME

If you have to travel over 100 kilometres (one way) to the nearest medical and/or dental specialist, you can make a claim to get back some of the costs for **travel** and **accommodation**.

If you need someone to go with you, they can also claim some costs.

To be able to claim you must be;

- Living in a Victorian rural area
- Have referral to the nearest specialist and
- Travel 100km or more (one way) from your home to the place of the nearest specialist.

Application forms are available from the Department of Human Services or your doctor's receptionist or download at

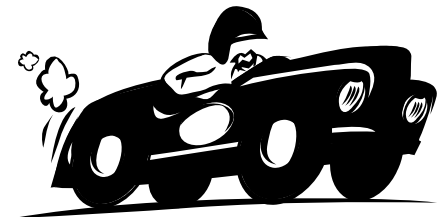
[http://www.health.vic.gov.au/ruralhealth/downloads/vptas\\_claimsep06.pdf](http://www.health.vic.gov.au/ruralhealth/downloads/vptas_claimsep06.pdf)

## DEPARTMENT OF VETERANS' AFFAIRS

If you have a Repatriation Health Card you may be able to claim **travel** costs for visits to the doctor and to medical appointments.

**Accommodation** and meal allowances may be claimed if you have to stay away from home for treatment.

You need to check with the Department of Veterans' Affairs as to what is covered by each coloured card.



## DEPARTMENT OF VETERANS' AFFAIRS

**Victorian State Office**

PH: 1800 555 254

**SOUTH WEST COMMUNITY  
TRANSPORT**

This information leaflet only  
gives you some ideas....

If you want to know more or ask questions  
about other transport matters,

Contact: Becky Morton

South West Community Transport  
Coordinator

PH: (03) 5551 8461

WEB: [www.wdhs.net/swct](http://www.wdhs.net/swct)

EMAIL: [rebecca.morton@wdhs.net](mailto:rebecca.morton@wdhs.net)



**SERVICES IN THE BALMORAL  
AREA**

**AMBULANCE**

EMERGENCIES ONLY PH: 000

**BALMORAL COMMUNITY TRANSPORT**

PH: (03) 5570 1304

Door to door assisted transport provided by  
volunteer drivers for eligible clients

**BALMORAL COMMUNITY BUS**

PH: (03) 5570 1304

Runs fortnightly on Thursdays, alternating  
between Horsham and Hamilton. Pick up in  
Cavendish on Hamilton trips.

**HORSHAM TO HAMILTON BUS**

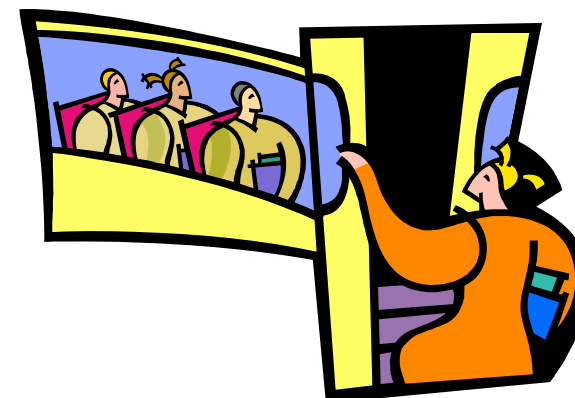
PH: (03) 5382 2353

Monday to Friday service between Horsham  
and Hamilton. Departs Balmoral 8.20am  
and arrives back 11.10am with around 70  
minutes in Hamilton

Pick up in Cavendish at 8.50am

*(Reviewed April 2009)*

TRANSPORT OPTIONS IN  
**BALMORAL**



**SOUTH WEST COMMUNITY  
TRANSPORT**

PH: (03) 5551 8461

WEB: [www.wdhs.net/swct](http://www.wdhs.net/swct)