

Enrolled Nurse Graduate Program

Western District Health Service (WDHS)
Hamilton - Victoria.

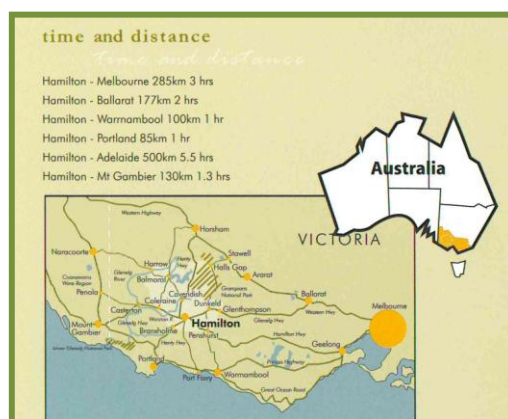


Western District Health Service

Western District Health Service is a multi-campus facility providing a broad range of hospital and community-based health services to the Western District of Victoria. Based in Hamilton, it includes Hamilton Base Hospital, Coleraine and Penshurst Hospitals and Aged Care facilities. The entity provides 96 acute and 170 high and low level aged care beds.

Hamilton is in the Western District of Victoria, mainly a farming area 3 ½ hours from Melbourne. There is a wide variety of local and "chain" stores, as well as banks, supermarkets, a performing arts centre and cinema. Hamilton has an excellent range of primary and secondary schools, both private and state, as well as TAFE and RMIT campuses.

Hamilton is ideally placed to access the Coonawarra wine district, the Grampians National Parks and is less than one hour from the coastal cities of Warrnambool, Port Fairy and Portland and is one and a half hours from South Australia.



The Graduate Nurse Program

The Enrolled Nurse Graduate Program operates across all facilities of Western District Health Service and is a carefully planned and integrated twelve month educational program designed to consolidate nursing skills and increase professional awareness under the supervision and guidance of experienced and competent nurses.

Western District Health Service offers a program that provides a broad range of clinical experience throughout the acute and aged care settings with rotations at the acute hospital, a rural hospital and aged care facilities.

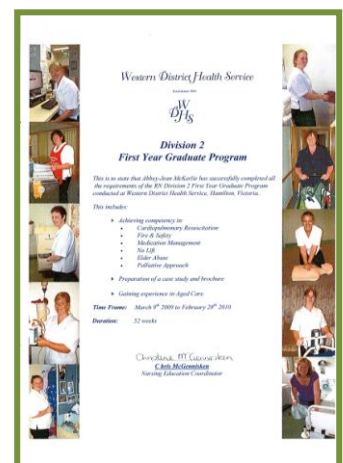
The program is designed to provide the graduate with:

- A structured and challenging clinical experience in a supportive environment.
- Increased career satisfaction and better patient care by assisting participants with a smooth transition from student to graduate.
- Opportunities to gain exposure and experience in a variety of health care settings to broaden clinical skills for future career pathways.
- Consolidation of knowledge and skills with successful integration into clinical practice.
- Organisational and prioritisation skills.
- An understanding of clinical risk management in the workplace and preventative strategies associated with risk management.
- Regular feedback of progress throughout the twelve months with formal appraisals.



The Western District Health Service Graduate Nurse Program offers:

- Outstanding clinical support and guidance by Practice Development Nurses in each clinical area.
- Extensive preceptorship/mentor support foundations in all clinical rotation.
- Diversity of nursing practice and clinical skills.
- A comprehensive one week orientation program.
- Access to an outstanding clinical skills laboratory.
- Numerous paid professional study sessions throughout the year.
- Five weeks annual leave.
- Formal appraisals reflecting on your development as a nurse in each clinical area.



Benefits of participating in the Graduate Nurse Program at Western District Health Service:

- Safe and friendly working environment.
- Salary Packaging.
- Rural and Remote Housing Subsidy.
- Free onsite parking.
- Personal email account.
- Corporate discount rates to gym membership at HILAC.
- Access to Western District Health Service Social Club Membership – excellent for establishing social networks with monthly Happy Hour, regular evening and day gatherings and an exceptional Christmas function. Frequent access to a range of cash voucher's with all year round discounts available at numerous outlets throughout the district. Access to low-priced annual hospital gym membership.
- Certificate on completion of the program.
- Opportunity for participation in the Second Year Graduate Program the following year.

Career Path following Graduate Year

There will be an opportunity for graduate nurses to apply for further employment following the graduate year. Successful applicants will then participate in the second year program.

During the second year program, the participants will continue to gain experience in different areas of the Health Service, or they may be given the option of specialising in a clinical area of interest. Participants will again be supported by the Practice Development Nurses and their colleagues working as preceptors and mentors in the ward areas. Second year participants will be provided with objectives and a study day to assist in the continuation of knowledge and skill development.



Further Information

Please visit our web page at www.wdhs.net or contact:

Christine McGennissen
Nurse Education Co-ordinator
Western District Health Service
PO Box 283
Hamilton Vic 3300
Chris.McGennissen@wdhs.net
Phone: 03 55518266

Application Process

Western District Health Service will advertise positions for the Registered Nurse Division 2 Graduate Nurse Program in the Hamilton Spectator, usually in the Saturday Edition.

Applications for these advertised positions are to be forwarded to the Human Resources Department with a detailed Curriculum Vitae, including three referees, your academic transcripts along with your clinical placement reports.

Please forward applications to:

Hilary King
Human Resources Manager
Western District Health Service
PO Box 283
Hamilton Vic 3300

